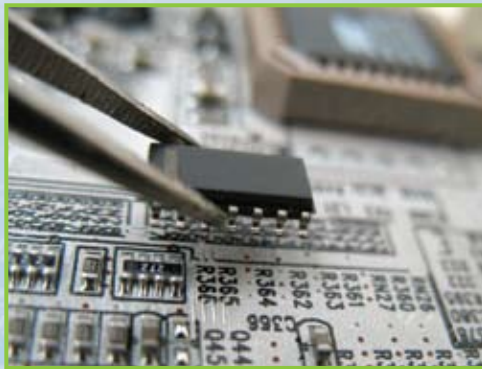




# **INTUITIVE**

**Research and Technology**



COMMITTED TO  
**EXCELLENCE**

**INTUITIVE**  
**1<sup>ST</sup> DECADE**  
*of excellence*

EST. 1999

# INTUITIVE'S COMMITMENT...

Success depends on partnering with companies you can trust. **INTUITIVE** delivers more than just promises. We have a solid track record of technical and programmatic support to clients throughout defense, commercial, and governmental sectors. Over the past decade, companies and organizations throughout the world have trusted **INTUITIVE's** extensive experience to provide production support, systems engineering, programmatic support, product development, rapid prototyping, and technology management.

Our approach couples the latest technology with engineering expertise, analytical proficiency, and keen managerial oversight to successfully accomplish your objectives. From design through production to sustainment, we proudly provide management and technical solutions throughout all phases of the systems lifecycle.

Each member of **INTUITIVE's** diverse team plays a vital role in customer service. We hire only top-notch individuals who make sure your success and growth is sustained with every project. Our people are our strength and our commitment to you is unwavering excellence.

## ...TO EXCELLENCE



### Electronic System Support Laboratory

Provides a one-stop shop for electrical / mechanical design and analysis, as well as test and evaluation support.



### 3<sup>rd</sup> Party Logistics / Logistics Analysis

Supply 3<sup>rd</sup> party logistics / logistics analysis support via our warehouse facility.



### Energy Conservation

Identify and facilitate methods to reduce energy consumption and energy peak power demands.



### Programmatic Support

Perform a variety of programmatic functions such as program management, strategic planning, and cost / schedule analysis.



## SERVICES > SOLUTIONS > SUPPORT

### Project & Technology Management

- Project, Planning, Organization, and Implementation
- Acquisition Planning and Management
- Budget and Financial Management
- Earned Value Management Systems and Processes
- Cost and Economic Analysis
- Risk Analysis / Management
- Technology Forecasting / Management

### Production Systems Analysis & Support

- Manufacturing Modeling and Simulation
- Production Line Validations
- Product Process Verification Reviews
- Production Readiness Reviews
- Lean Manufacturing
- Value Engineering

### Simulation Analysis & Modeling

- New and Existing Design Evaluations
- Cause of Failure Evaluations and Troubleshooting
- Parts Substitution and Parts Failure Analysis
- Overstress Analysis and Verification
- Operational Design Margin Verification
- Electronic Circuit Simulation

### Technical Services

- On-Site Specialty Engineering and Technical Services
- Second Source Analysis and Validations
- Test Support and Analysis
- Energy Assessments
- Subject Matter Experts
- Red Teams
- 3<sup>rd</sup> Party Logistics / Logistics Analysis

### Systems Analysis & Integration

- Process Modeling and Simulation
- Life Cycle Cost Estimating
- Acquisition Planning
- Trade-Off Analysis
- Producibility Analysis
- Technical Performance Measures
- Systems Engineering Management
- Root Cause Analysis
- Decision Making / Evaluation
- Reliability Analysis

### Development & Rapid Prototyping

- Systems Design, Engineering, and Integration Technology Transfer
- Mechanical Design, Engineering, and Analysis
- Equipment Modifications
- Reverse Engineering
- Electrical Design, Engineering, and Analysis
- Partnerships with Electronic, Material, and Mechanical Fabricators

### Quality & Reliability Support

- Quality Management Systems Compliance
- Design Reviews
- Subcontractor / Vendor Control
- Quality Engineering
- Reliability Engineering
- FRACAS Development

## SERVICE AND TRUST...

...at the heart of our relationships, both among us and with our customers.





[WWW.IRTC-HQ.COM](http://WWW.IRTC-HQ.COM)

5030 Bradford Drive, NW | Building 2, Suite 205 | Huntsville, AL 35805  
P: 256.922.9300 | F: 256.922.1122 | [info@irtc-hq.com](mailto:info@irtc-hq.com)